



Mpingo Conservation & Development Initiative



Status quo
Communities with no legal rights or incentives clear forests for other land uses

OUR PROCESS



Community forest rights
We support communities to own and sustainably manage their forests through Participatory Forest Management



Sustainable timber production
We train communities to harvest responsible timber that is certified by the Forest Stewardship Council™



Linking with buyers
We link communities with buyers, helping them to sell their timber locally, regionally and internationally



Community benefits
Communities decide how to use their timber income to address their local development needs and we provide governance support



Locally-driven forest conservation
When local people see the benefits that come from keeping forests healthy, they act to conserve them



Financial sustainability & scale
Communities opt to pay a portion of their timber revenues to local government authorities and MCDI, enabling us to expand and improve our support



77,200 beneficiaries



IMPACTS:

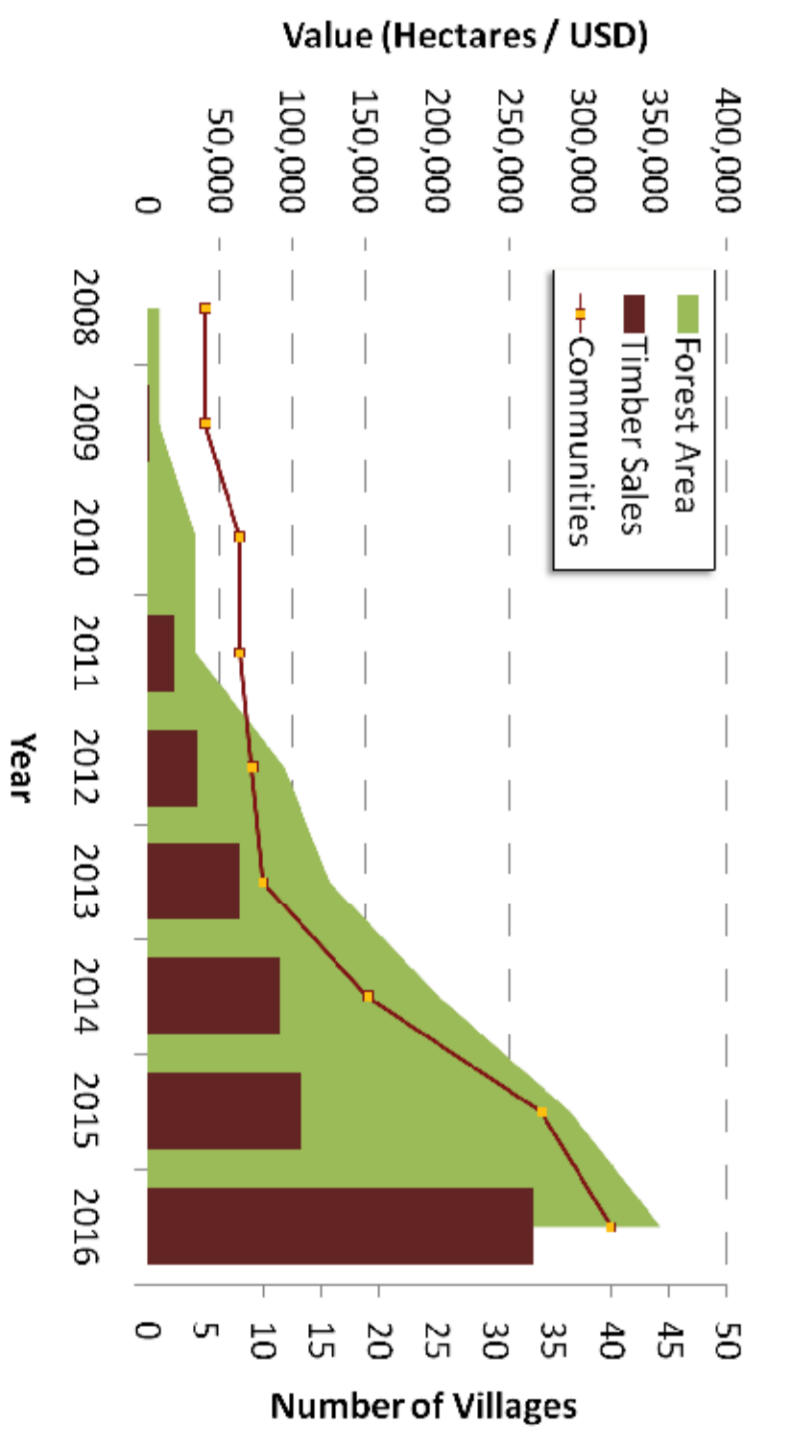
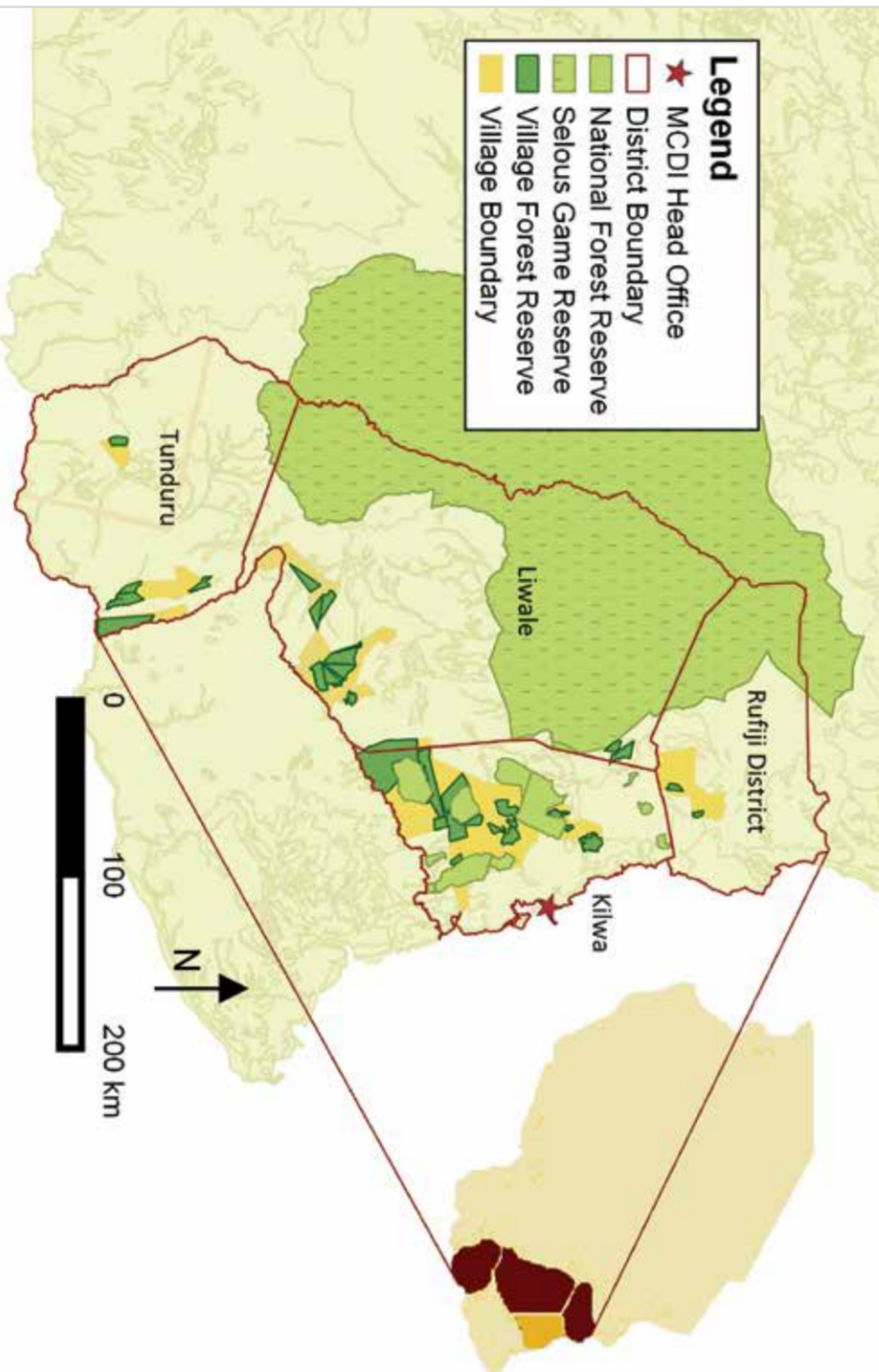


185,622 ha
Certified by the Forest Stewardship Council™



6,300 metre³
Volume of hardwoods sustainably harvested and sold - 2,477m³ in 2016-17

WHERE WE WORK



KEY MILESTONES

2004	Registered as NGO
2006	First village forest reserve in Kilwa District declared with our support
2009	In partnership with Kilwa District Council, facilitated the first ever commercial timber harvest from a village forest reserve in Tanzania Awarded first Forest Stewardship Council™ certificate for community-managed natural forests in Africa
2010	Launched our pilot REDD project to diversify community forest revenues through improved fire management, funded by the Royal Norwegian Embassy
2013	Cumulative timber sales pass TZS 180 million (\$100,000) Communities agree to pay a portion of their forest revenues to MCDI to cover our core costs and support service provision Our first significant expansion begins in Angai Forest, Liwale District
2014	First payment for our service provision received from one community Communities income from timber sales doubles - they earned more than TZS 180 million (\$100,000) this year alone Expanded to Tunduru District, funded by World Wide Fund for Nature (WWF) Tanzania Country Office
2015	New community-based fire management method approved by Verified Carbon Standard for use in Eastern Miombo Woodlands that stretch some 2.8 million km² of East and Southern Africa
2016	Won two prestigious international awards in two months: Whitley Award for Nature and National Geographic Buffett Award for Leadership in African Conservation

OUR VISION FOR THE FUTURE



- Add value to local hardwoods through sawn timber production
- More revenues means communities earn enough to cover 100% of their forest management own costs
- This business-like approach reduces dependence on donors for financial aid, lowers risk
- Additional funds raised can be focused on scaling up the model into more villages, more forests protected

POLICY STATEMENT

Globally, any sensible Government empowers [its] Citizens to become economically independent. If we enable our citizens to be independent, then this nation will come to have an economy that is stable and self-supporting... As a nation, it is crucial that we use the support that we receive to stand on our own feet, so that we can be independent. If we are independent we can protect our freedom

Hon. Christopher E. Ngubhagali, Kilwa District Commissioner
Like the Kilwa District Commissioner, we believe that for community-based forest management to be truly sustainable, villages along with the Government and NGOs by which they are supported should strive to be financially self-sufficient. Therefore, we call for the Tanzanian Government to allocate sufficient funding and resources to support the development of sustainable community forestry. Grants and other sources of external funding can be used to complement these internal revenues

I know the value of the forests, I will protect them

Hadlia Makokoto, Nainokwe Village

CONTACT US | www.mpingoconservation.org | enquiries@mpingoconservation.org | +255(0)784 938 097 | P.O Box 49, Kilwa Masoko

